

XPRESSENTRY

XPressEntry / Paxton Synchronization Revision 2/07/2023

For use with the
XPressEntry Mobile Access Control System

By



Important Notice

Your right to copy XPressEntry software and this manual is limited by copyright laws. Making copies, adaptations, or compilation works (except copies of XPressEntry software for archival purposes as an essential step in the utilization of the program in conjunction with the equipment), without prior written authorization of Telaeris, Inc., is prohibited by law and constitutes a punishable violation of the law.

This software and documentation are copyrighted by Telaeris, Inc. The software and documentation are licensed, not sold, and may be used or copied only in accordance with the Telaeris License Agreement accompanying the software.

© 2023 Telaeris, Inc.

All rights reserved worldwide.

Information in this document is subject to change without notice. No part of this publication may be reproduced, stored in a retrieval system, or transmitted, in any form or by any means, electronic, mechanical, photocopying, recording, scanning, digitizing, or otherwise, without the prior written consent of Telaeris, Inc.

Trademark Acknowledgements

XPressEntry is a trademark of Telaeris, Inc.

Microsoft, Windows, Access are trademarks or registered trademarks of Microsoft Corporation.

Other company and product names may be trademarks or registered trademarks of their respective companies and are hereby acknowledged.

Telaeris, Inc.
4101 Randolph Street
San Diego, California 92103
United States of America

(858) 627-9700

www.telaeris.com

Table of Contents

- Purpose..... 4**
- Prerequisites 4**
- Paxton SDK 4**
- Setting Up Paxton for XPressEntry Entry/Exit 4**
- Setting Up Paxton for Emergency Mustering 5**
- Enable XPressEntry Synchronization 5**
 - Reader Profile Tab 6
 - Data Manager 7
- Paxton Setup Page..... 9**
- Set Zones to Doors 10**

Purpose

This document is intended to instruct users on how to synchronize an XPressEntry system with a Paxton NET2 Access Control system. XPressEntry has the capability of providing access control and emergency evacuation management from a handheld device. **For XPressEntry setup information, see the document, “XPressEntry Installation and Upgrade” found at <https://telaeris.com/documentation>.**

Prerequisites

1. NET2
2. XPressEntry server 3.3+

XPressEntry can be installed on the same machine as NET2, or another machine on the same network. If XPressEntry is installed on a remote machine, it should have TCP access to the Paxton NET2 installed machine over port 8025 or the configured port.

Paxton SDK

It is assumed Paxton NET2 Access Control is installed on a server. Additionally, the Paxton SDK needs to be installed for XPressEntry to sync. Please contact your Paxton dealer to receive both the Paxton installation and the Paxton SDK. The Paxton SDK should be installed on the same machine as XPressEntry.

Setting Up Paxton for XPressEntry Entry/Exit

XPressEntry pulls all doors, readers, users, pictures, badges, and access permissions from Net2. In Net2, create a door for **each** handheld device in XPressEntry. Give each reader an acceptable name to represent the in and out readers on the door. Set the Reader Type to “Paxton Reader”.

The screenshot displays the Net2 Access Control software interface. On the left is a navigation tree with categories like Events, Users, Access levels, Timezones, Doors, Site graphics, Reports, and Net2 operators. The main window is titled 'Test' and shows configuration for a specific door (ACU serial number: 12345678). The 'Door name' is 'Test'. Under 'Unlock the door during', the 'Door open time' is set to 7 seconds. The 'Reader details' section shows 'Name' as 'Test (In)', 'Reader type' as 'Paxton reader', 'Keypad type' as 'None', and 'Token data format' as 'Default'. The 'Operating mode' is set to 'Inactive'. A note indicates that 'Timed operating modes' are not active. The 'Reader action' is set to 'Relay 1 opens for door open time'.

Each handheld can represent a reader that enters a door AND exits a door. A Paxton door can have two readers associated with it. When a handheld scans in Entry Mode, it scans as if it is Reader 1 on the Paxton door it is assigned. When a handheld scans in Exit Mode, it scans as if it

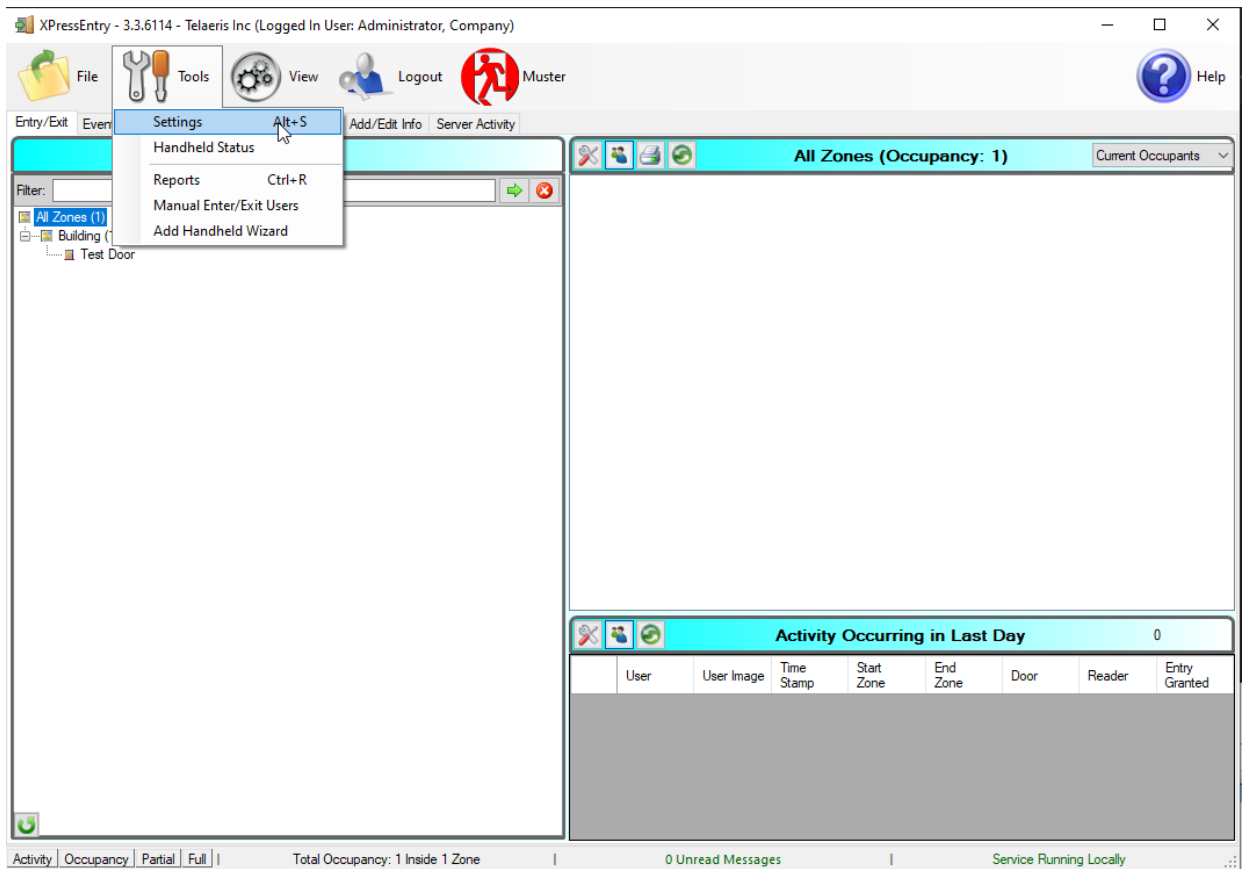
is Reader 2 on the Paxton door it is assigned. Once the doors are created, you can assign access from within the Net2 system as you would for any normal reader.

Setting Up Paxton for Emergency Mustering

XPressEntry does not need additional configuration on the Paxton side for Emergency Mustering. XPressEntry will pull Paxton's existing doors and readers in order to determine occupancy within Paxton.

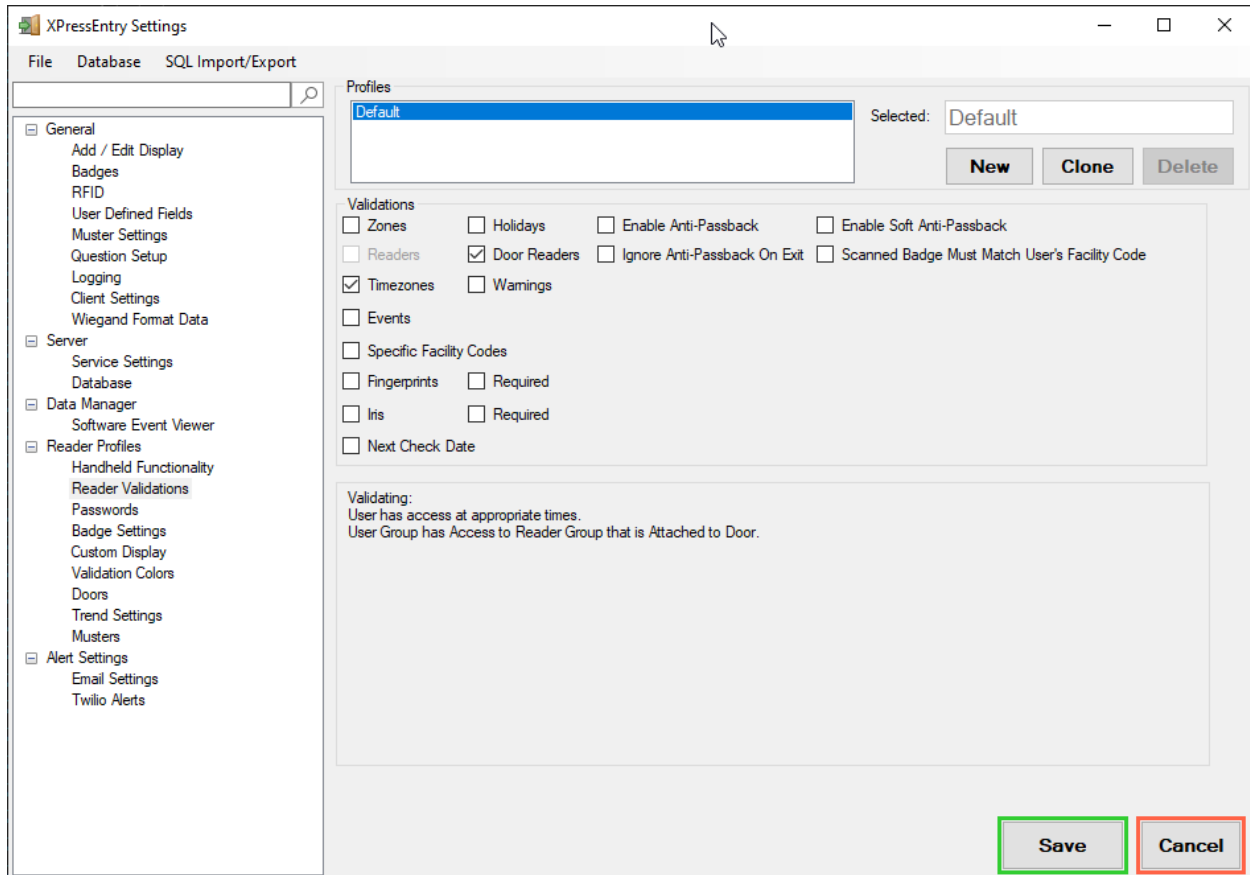
Enable XPressEntry Synchronization

XPressEntry uses a module called "Data Manager" to synchronize all data with Paxton. From the main page of XPressEntry, go to XPressEntry / Settings (**CTRL+S** or **Tools>Settings**)



Reader Profile Tab

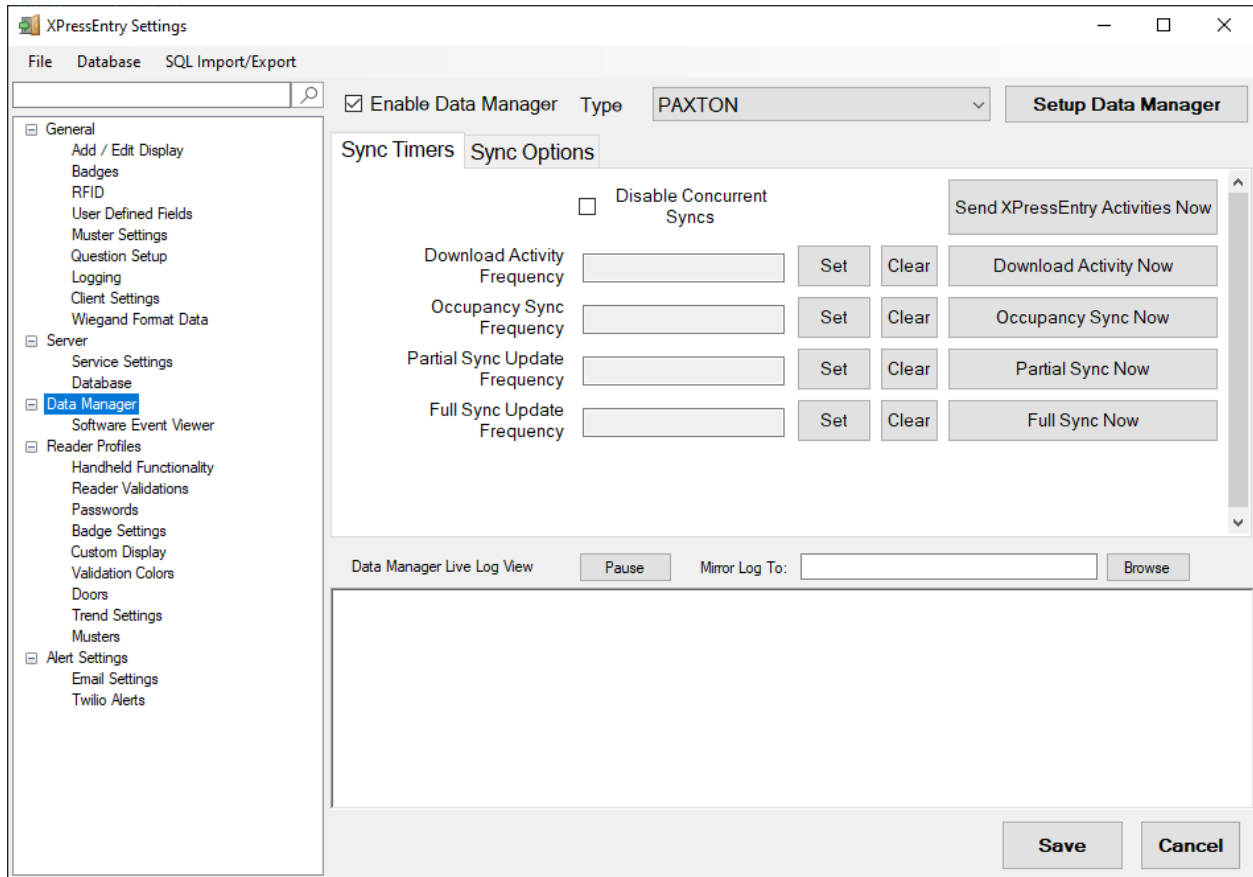
The Reader Profile Tab is where you configure the handhelds.



Make sure “Door Readers” and “Timezones” are checked under “Reader Validations”. Select “Save” at the bottom right when finished.

Data Manager

From the Settings, select the Data Manager



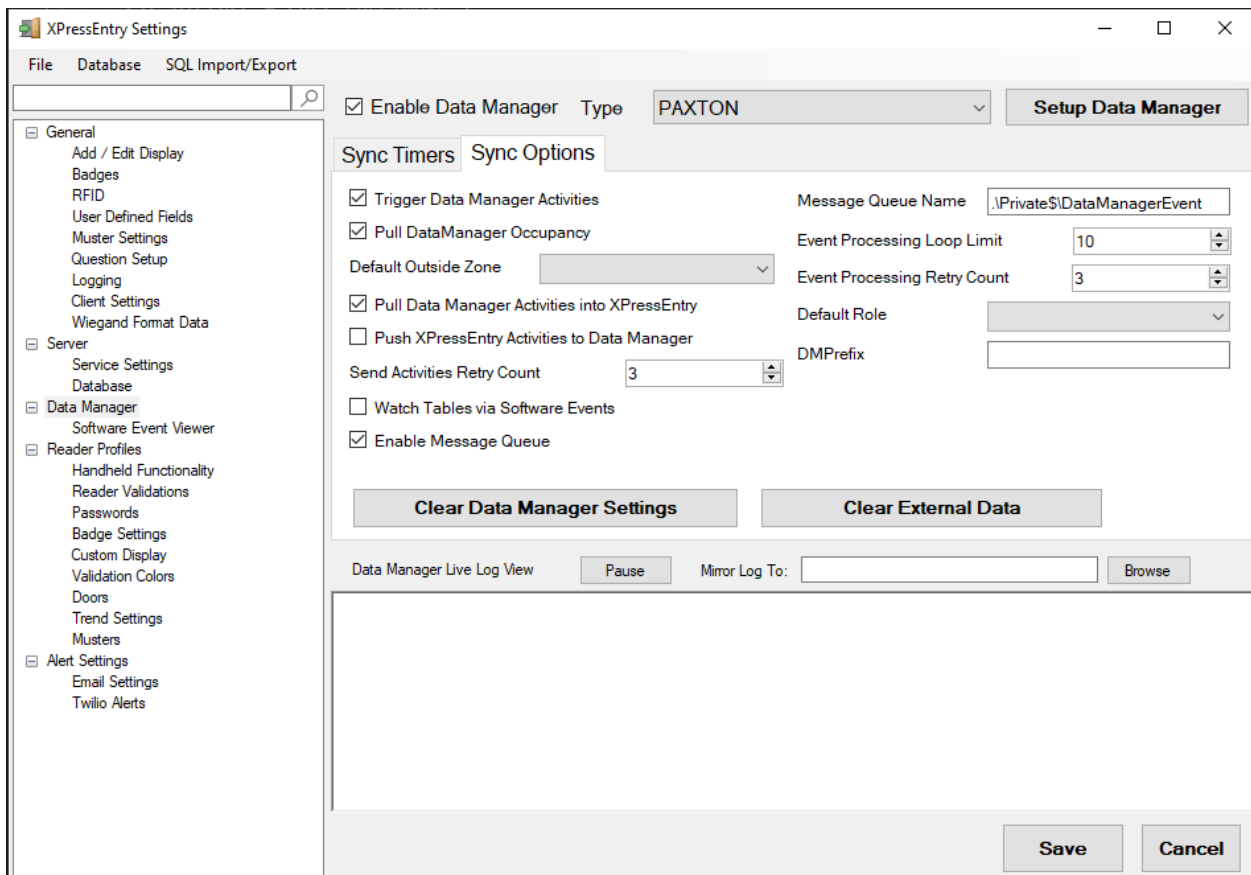
- a. **Type** - This is the integration type. Select PAXTON.
- b. **Setup Data Manager** - Sends you to the setup form for Paxton's data manager.
- c. **Save and Apply Settings** - Saves all settings from the setup form, update frequencies, and activity Synchronization options.
- d. **Update Frequency options** - Sets and clears the intervals in which the data manager updates XPRESSEntry.
- e. **Sync Now functions** - Runs an immediate update.
- f. **Send XPRESSEntry Activities Now** - Used to send XPRESSEntry handheld activities to Paxton.

Set the Update Frequency to as often as you want the system to fully update. Note that only one update can run at a time and if this value is very low the system will constantly try to update (this is not always a problem).

1. **Full Sync Update** - This sync will grab all relevant records from Paxton and update them in XPRESSEntry. If there are a high volume of users in Paxton, this sync option can take some time.

2. **Partial Sync Update** - This sync will grab records from all tables but will only pull users that have been updated since the last data pull. This is valuable for adding new or updated users into the XPressEntry system without a long sync time.
 - a. **Do use this sync to:**
 - Quickly update any table in XPressEntry
 - Quickly pull user changes into XPressEntry from Paxton
 - b. **Do NOT use this sync to:**
 - Delete a user from XPressEntry who was deleted in Paxton.
3. **Download Activity and Occupancy Sync Update -**
 - a. XPressEntry can pull Occupancy information from Paxton based on card scans within the Paxton system. If a user scans into the system, the user can be added to the system occupancy within XPressEntry. If a user scans at an exit reader in Paxton, the user can be removed from the XPressEntry occupancy. This is commonly used for Emergency Evacuation management.
 - b. **When pulling Occupancy, XPressEntry:**
 - Moves users to the zones they are entering when they scan at a reader.
 - c. **When pulling Activities, XPressEntry:**
 - Moves users to the zones they are entering when they scan at a reader.
 - Keeps a log of the activity in its activity history.

These options can be changed at any time. Changing any option will immediately take effect.



1. **Trigger Data Manager Activities** - Automatically send Entry and Exit scans from handhelds to Paxton. Check this for Entry/Exit
2. **Pull Data Manager Occupancy** - Enables Occupancy pull. Check this or Activities into Zone for Mustering
3. **Pull Data Manager Activities into Zone** - Enables Activity Pull. Check this or Data Manager Occupancy for Mustering
4. **Watch Tables via Software Events** - Check if using Mustering
5. **Enable Message Queue** - Check if using Mustering

Paxton Setup Page

Select Setup Data Manager from the Data Manager Page.

Paxton Data Setup

Paxton Address: 10.10.9.229

Paxton Port: 8025

User Name: OEM Client

Password: *****

Doors to Monitor

Doors To Monitor: 6740042,12345234 [Reload]

- Office Front Door
- Test
- Office Back Door

Muster Only

Map Zones to Door

Lookup Activities As Query

[Connect] [Okay] [Cancel]

1. **Paxton Address** - IP Address or Hostname of Paxton Server
2. **Paxton Port** - TCPIP port of Paxton SDK
3. **User Name** - Username of an Admin in Net2
4. **Password** - Password for above username

5. **Doors to Monitor** - This is specific to *Mustering*. These are the doors that XPressEntry will collect scans from to determine occupancy.
6. **Must Only** - Check this if only using XPressEntry for *Mustering*
7. **Map Zones to Doors** - Automatically creates an entry and exit zone for each door XPressEntry pulls.
8. **Lookup Activities as Query** - Pulls occupancy as database query rather than directly through SDK.

Once these settings are set, run a Full Sync and set the Sync Timers. XPressEntry will begin pulling data from Paxton. Depending on the configuration, XPressEntry will begin pulling occupancy and/or sending activities to Paxton as handhelds scan.

Set Zones to Doors

If Map Zones to Door is NOT set within the Paxton Data setup there is one more step to configuring the Paxton Data. Each Door in XPressEntry that will be used for *Entry/Exit* or *Mustering* needs to have a start and end zone. By default, both fields will be blank if the aforementioned setting was not checked.

The screenshot shows the XPressEntry application window with the following details:

- Title Bar:** XPressEntry - 3.3.6114 - Telaar Inc (Logged In User: Administrator, Company)
- Menu Bar:** File, Tools, View, Logout, Entry/Exit, Muster, Help
- Sub-Menu Bar:** Entry/Exit, Events, Muster, Activity History, Messages, Add/Edit Info, Server Activity
- Page Header:** External Record:1010
- Tabs:** Users, Companies, Groups, Zones, Doors, Readers, RFID, Roles, Timezones, Muster Sites
- Left Panel (List):** Office Back Door (selected), Office Front Door, Test, Test Door
- Main Form Fields:**
 - Door Name: Office Back Door
 - Start Zone: (dropdown menu, highlighted with a red box)
 - End Zone: (dropdown menu, highlighted with a red box)
 - Door RFID Tag #: (text input)
 - External Entry Reader: Office Back Door (In) [X]
 - External Exit Reader: Office Back Door (Out) [X]
- Buttons:** Add New, Delete, Save, Cancel
- Status Bar:** Activity | Occupancy | Partial | Full | Total Occupancy: 1 Inside 1 Zone | 0 Unread Messages | Service Running Locally

Set both fields on each door a handheld will be assigned to.